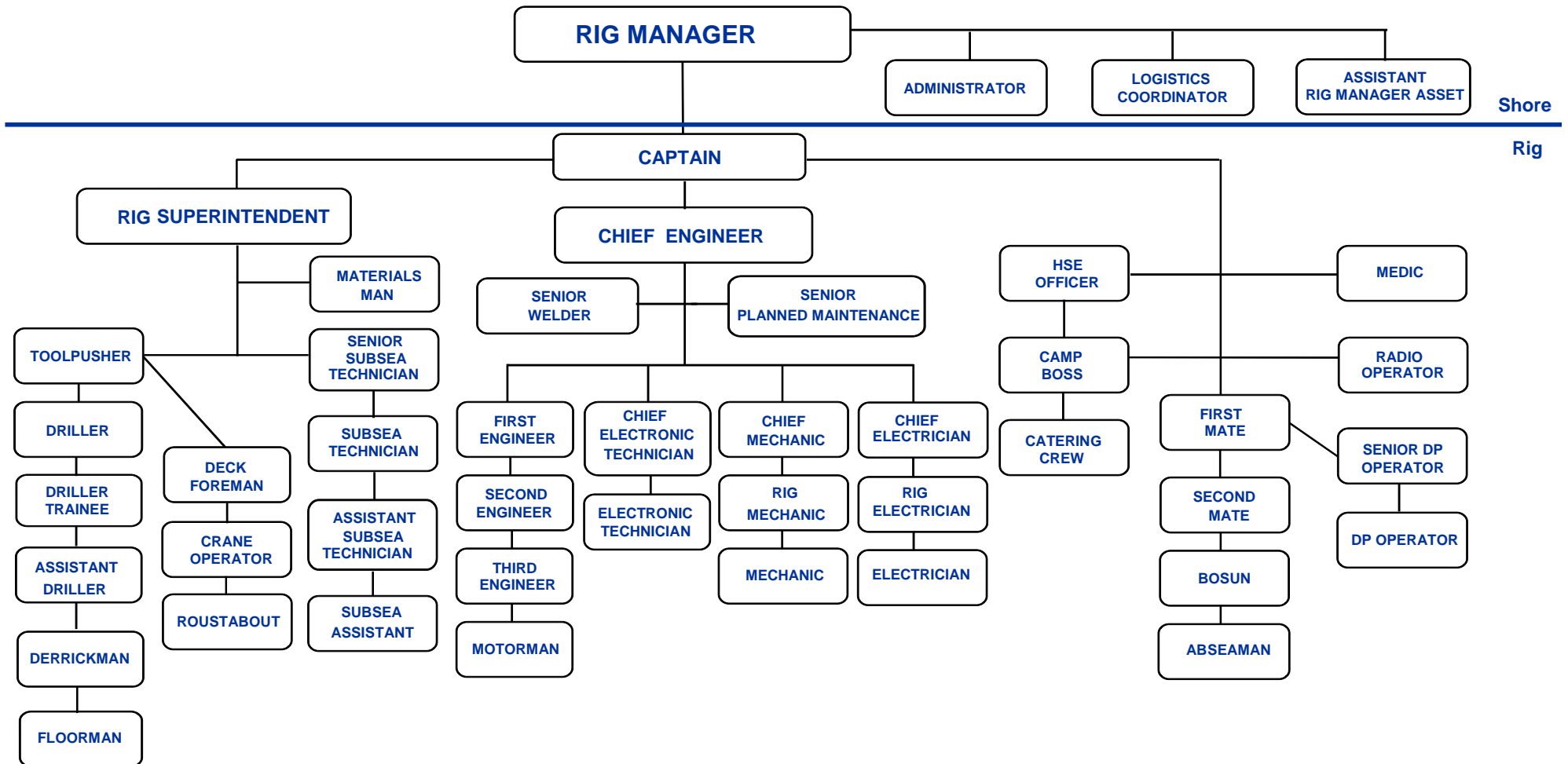


CORPORATE MANAGEMENT SYSTEM

Rig Organizational Chart



Captain as the overall in charge of the Rig, has the overriding authority and the responsibility to make decision with respect to safety of the crew/ vessel & pollution prevention.

Rig Superintendent as in charge of the Drilling has the authority to utilize various departments In the Rig to execute day to day drilling operation

Prepared By: CEO	Checked By:	Approved By:
Doc No.: CMS-00-0130	Revision No: 3	Uncontrolled When Printed
Jasper Drilling Pte Ltd	Date Issued:	Page 1 of 1